

2J6510B-M18-SP

433 MHz ISM Screw Mount

Key Features

433 MHz ISM

- 433-435 MHz

Screw Mount

Anti-Rotation Mounting

Ground Plane Dependent

Customizable Cable and Connector

Dimensions \varnothing 136 x 31.5 mm

Certificates: IK09, IP67, IP69K



1. Antenna and electrical specifications

Parameters	433 MHz ISM Antenna
Standards	ISM, LoRa
Band (MHz)	433 MHz
Frequency (MHz)	433-435
Return Loss (dB)	~-18.7
VSWR	~1.3:1
Efficiency (%)	~58.3
Peak Gain (dBi)	~-2.9
Average Gain (dB)	~-2.3
Impedance (Ohm)	50
Polarisation	Linear
Radiation Pattern	Omni-Directional
Max. Input Power (W)	50
Connector Type	SMA-Male Standard (Other Connectors Available)
Cable Length	300 cm Standard (Any Cable Length Available)
Cable Type	RG58 Standard (Other Cables Available)

Antenna Measurement Conditions:

Mounted on 60 x 60 cm Metal Plate

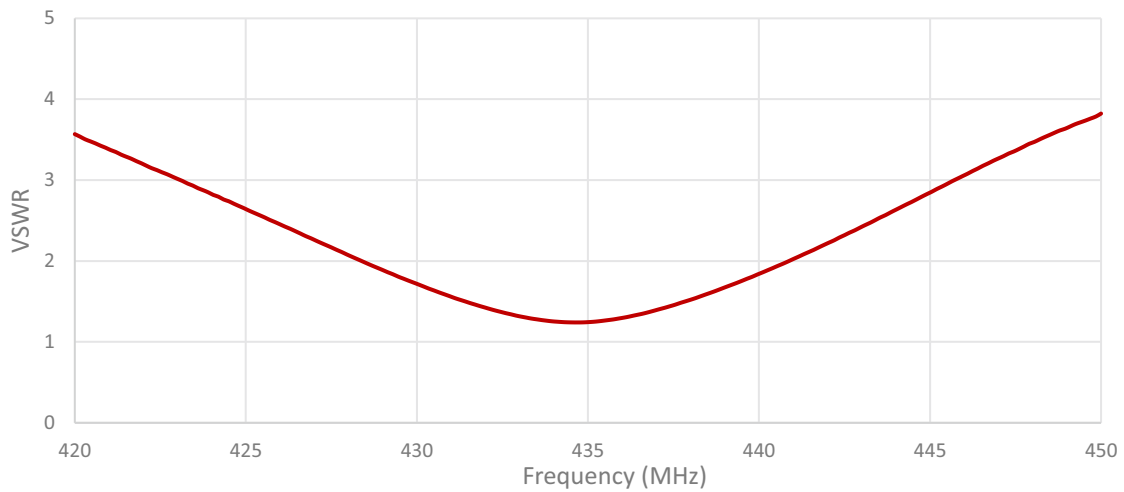
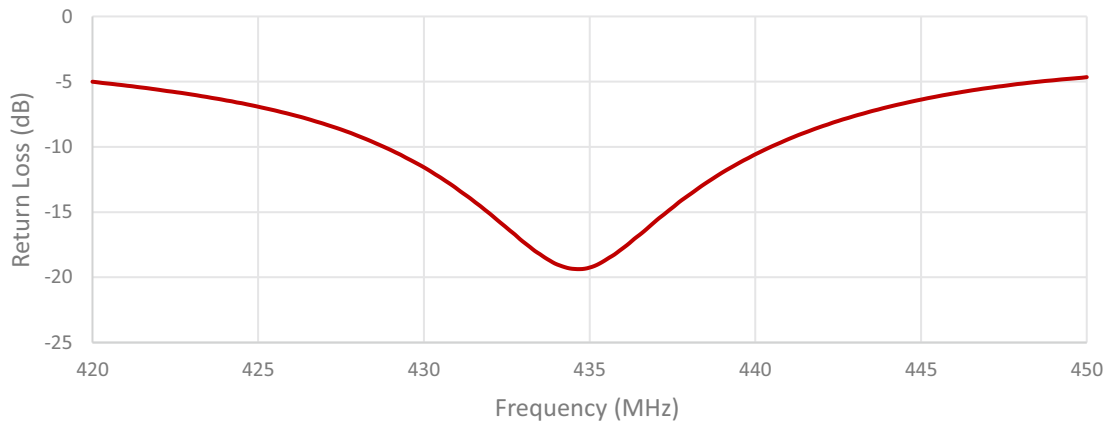
200cm of RG58 Cable

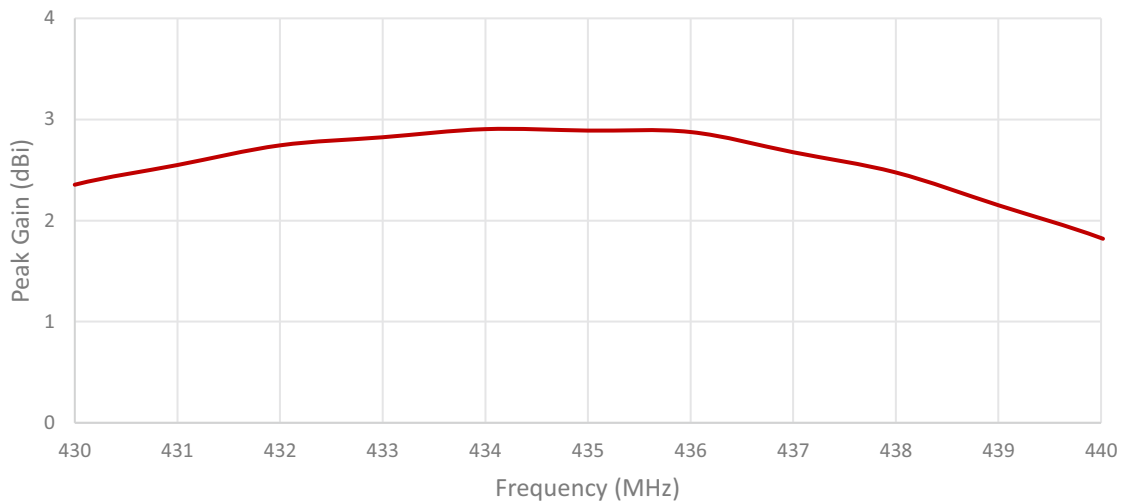
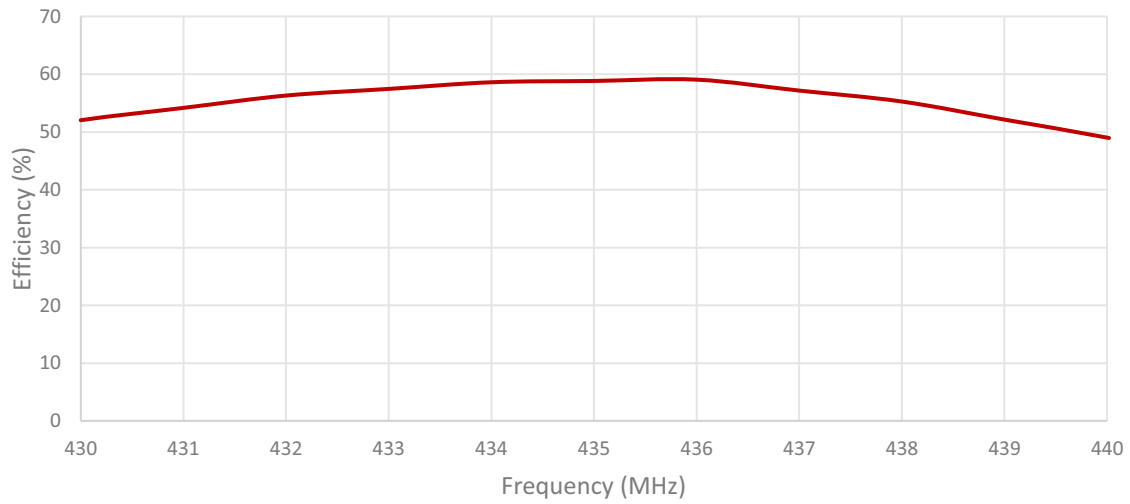
Measured in Certified CTIA 3D Anechoic Chamber

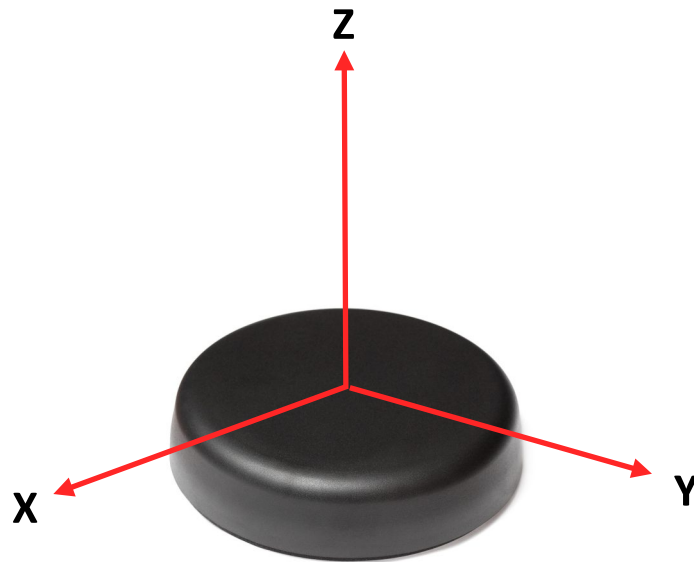
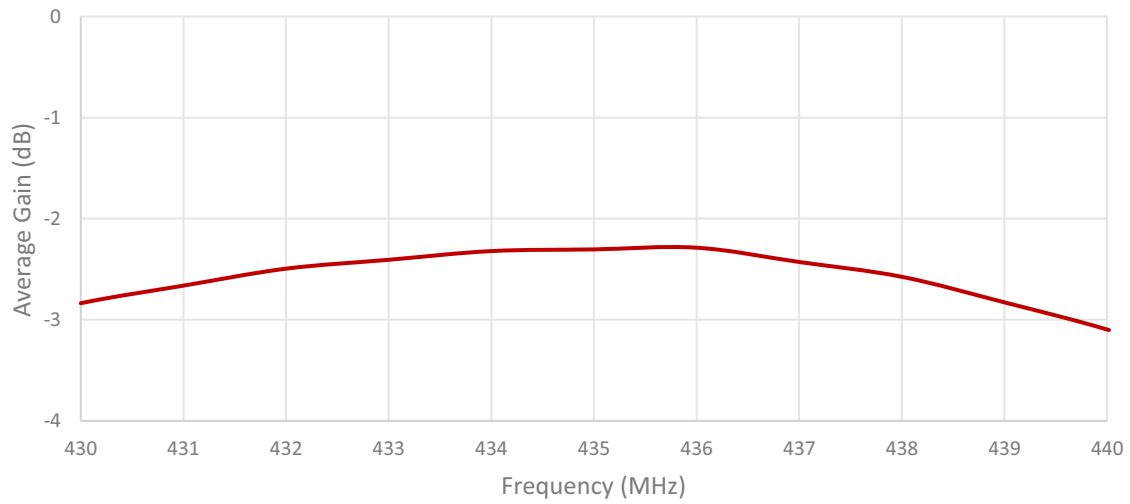
2. Mechanical and environmental specifications

Specifications	2J6510B-M18-SP
Mounting Type	Screw Mount
Dimensions (mm)	Ø 136 x 31.5
Rec. Tighten Torque (Nm)	6 Nm
Radome	ASA
Radome color	Black
Antenna Base	Zamak
Operating Temperature (C)	-40 to +85
Storage Temperature (C)	-40 to +85
Substance Compliance	RoHS
Certificates	IK09, IP67, IP69K

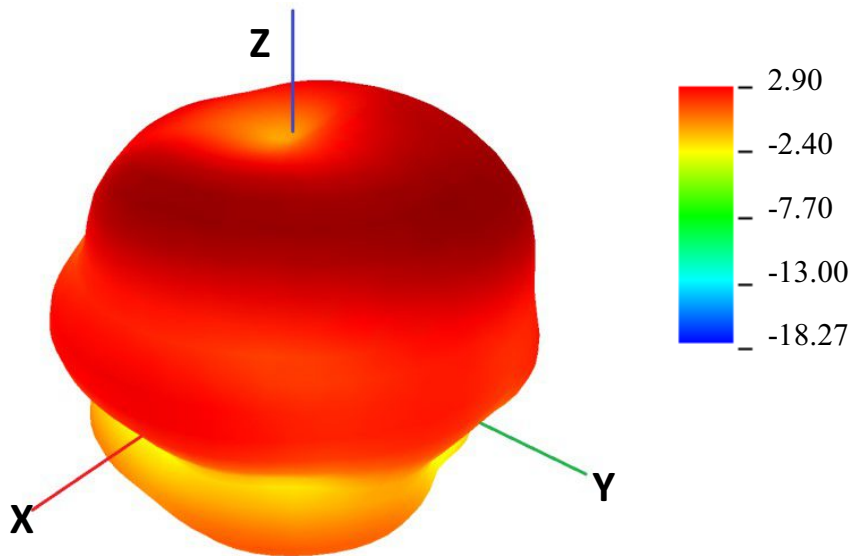
3. Antenna parameters





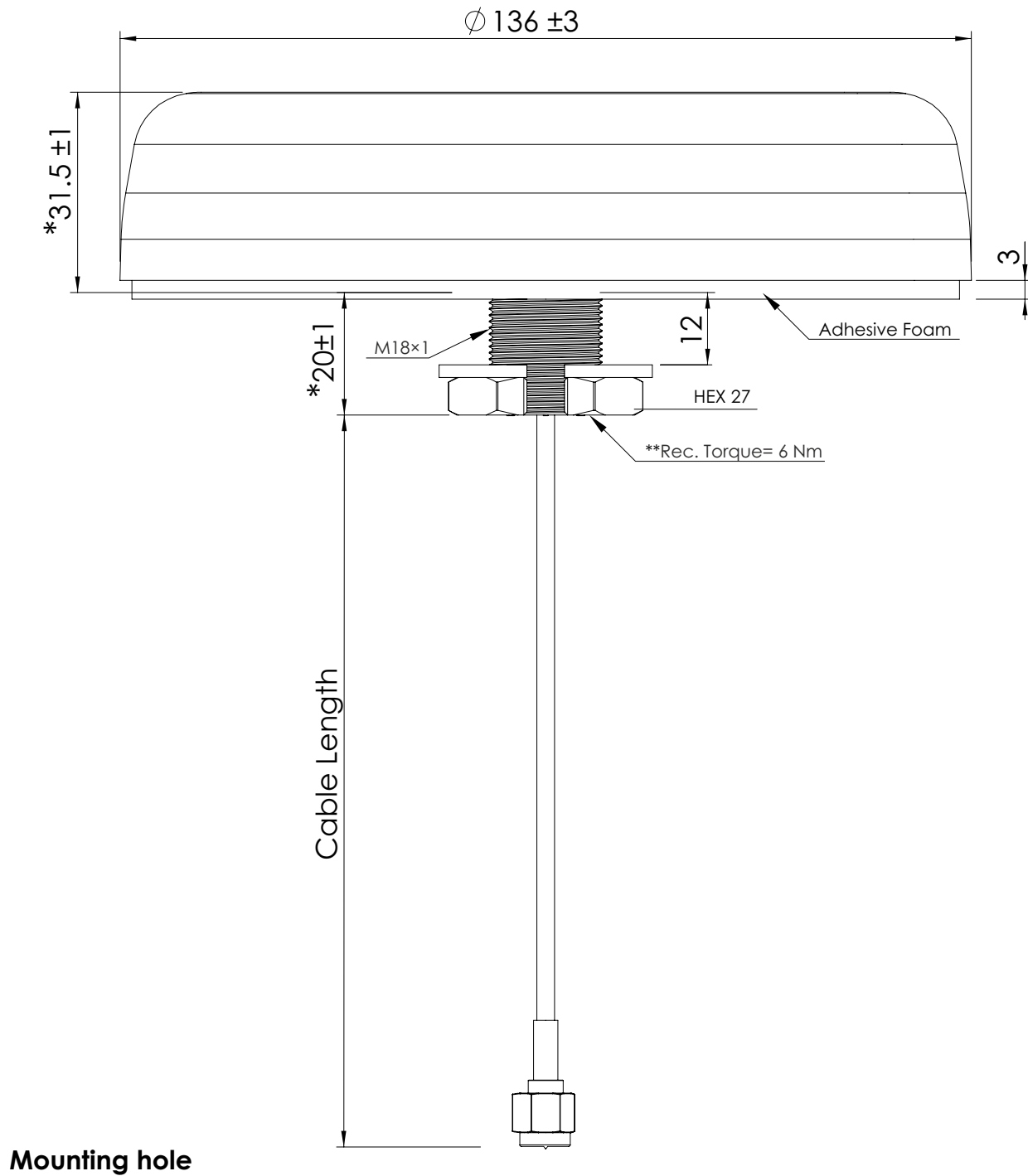


Radiation pattern reference

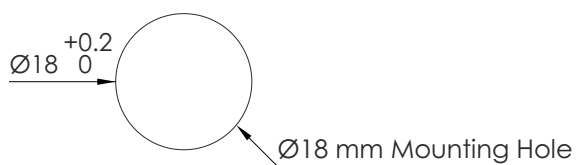


433 MHz Radiation pattern

4. Antenna drawings



Mounting hole



Max. mounting thickness 12mm
 Note: Dimensions are in millimeters
 *Dimensions are after mounting
 **Recommended Torque= 6 Nm

5. Antenna Images

